



## 25 Neville Street

Ulverston, LA12 0BJ

Offers In The Region Of £325,000



4



2



3



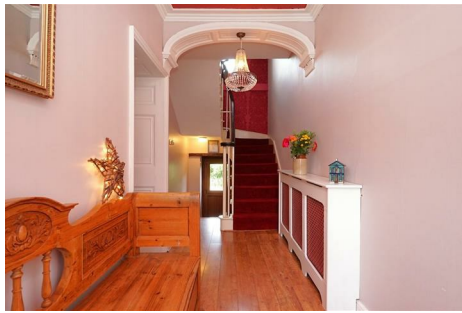
D



# 25 Neville Street

Ulverston, LA12 0BJ

## Offers In The Region Of £325,000



*A beautifully presented four-bedroom end-terrace home offering a stylish blend of modern décor and charming traditional features. This spacious property is perfect for families or buyers seeking character with contemporary comfort. With well-proportioned rooms, attractive interiors, and a warm, welcoming feel throughout, it's a home that combines period charm with modern living in an ideal location.*

*In addition to the generous living space, the property boasts multiple internal storage rooms—ideal for keeping the home clutter-free and organised. These versatile spaces are perfect for seasonal items, household essentials, or could even serve as a compact home office or utility area.*

Step into the impressive entrance hall, where original period features blend seamlessly with contemporary touches. The space sets the tone for the rest of the home, showcasing elegant wooden-style flooring that flows throughout the entire ground floor. Classic pitch pine doors add a warm, traditional character to the property.

From the hallway, you gain access to both the lounge and sitting room, as well as a storeroom and a workshop, offering excellent versatility for hobbies or additional storage. Stairs lead conveniently down to the basement level and up to the first floor.

The lounge is bright and welcoming, featuring decorative coving, architraves, and a striking feature wall. A flame-effect fire with a white surround adds a cosy focal point to the room. Across the hall, the sitting room offers a more rustic, relaxed feel with its charming wood burner—perfect for colder evenings.

On the basement level, you'll find a well-appointed kitchen with tiled flooring, base units, and wood-style work surfaces. It also includes plumbing for a washing machine, making this a highly functional space. The adjoining dining room, also tiled, provides ample room for family meals or entertaining, and includes access to an extra store room for added practicality.

Moving upstairs to the first floor, the property offers four well-proportioned bedrooms, a family bathroom, a separate shower room, and an additional store room, all designed to accommodate the needs of a busy household with ease.

Externally, the property continues to impress, with a low-maintenance outdoor space featuring decking, stone chippings, and established planters and shrubs. Double gates open to allow off-road parking, a sought-after feature in this area.

### Entrance Hall

16'3" x 5'4" (4.961 x 1.630)

### Living Room

16'9" x 11'11" (5.114 x 3.653)

### Snug

11'9" x 9'8" (3.606 x 2.969)

### Attached Outbuilding Room One

11'8" x 10'7" (3.564 x 3.231)

### Attached Outbuilding Room Two

10'4" x 9'9" (3.166 x 2.989)

### Hallway leading down to Kitchen/Utility/Stairs

11'10" x 6'8" (3.626 x 2.033)

### Kitchen

14'9" x 6'10" (4.505 x 2.106)

### Dining Room

12'7" x 12'1" (3.860 x 3.699)

### Utility

8'7" x 8'4" (2.630 x 2.541)

### Landing

11'0" x 10'3" (3.371 x 3.131)

### Bedroom One

12'3" x 11'8" (3.743 x 3.567)

### Bedroom Two

13'8" x 10'0" (4.171 x 3.056)

### Shower Room

7'11" x 7'1" (2.424 x 2.179)

### Bedroom Three

12'5" x 10'0" (3.804 x 3.052)

### Bedroom Four

10'9" x 9'9" (3.283 x 2.995)

### Family Bathroom

11'7" x 6'6" (3.552 x 2.005)

### Attached Outbuilding Room Two (Upstairs)

12'10" x 10'4" (3.933 x 3.166)





- Impressive Family Home
- Ample Storage Space
  - Four Bedrooms
- Garden and Off Road Parking

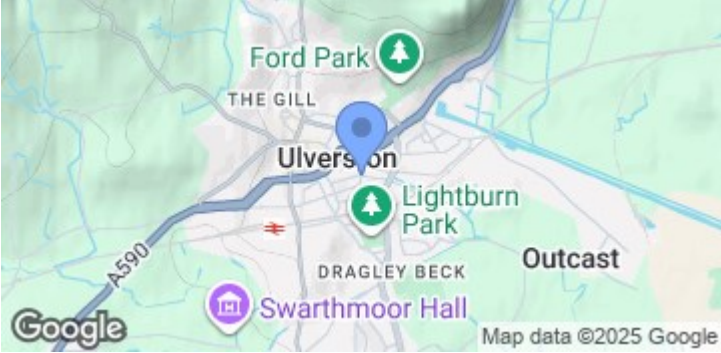
- Maintaining Some Original Features
- Generous Living Accommodation
  - Bathroom and Shower Room
  - Council Tax Band C



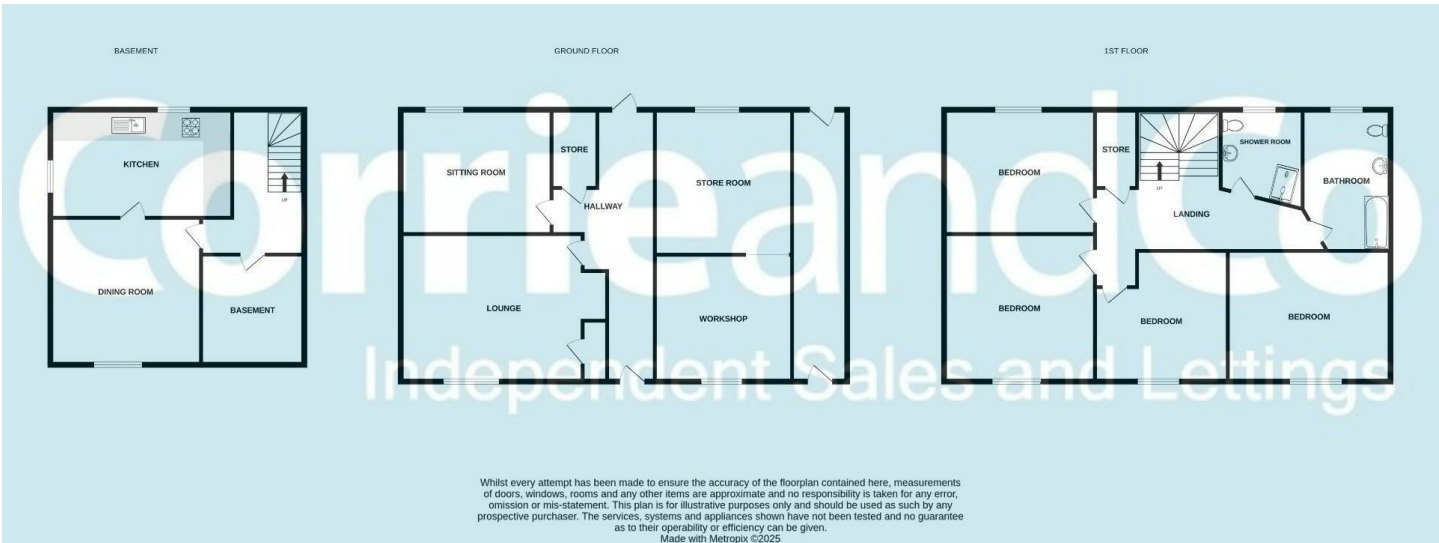
Road Map



Terrain Map



Floor Plan



We are local, family run business who are wholly independent which means we can recommend services to most suit your needs. Our aim is to provide quality advice and expertise at all times, so you can make an informed decision whether buying or selling.

Estate agents are required by law to check a buyers /sellers identity to prevent Money Laundering and fraud. You do have to produce documents to prove your identity or address and information on your source of funds. Checking this information is a legal requirement to help safeguard your transaction, and failing to provide ID could cause delays. Corrie and Co, outsource these checks to speed up the process. The company does charge for such checks, please ask for more information and guidance on associated costs.

To ensure your move is stress free, we can help with Mortgage advice. We work alongside local Solicitors, offering competitive conveyancing services. Ask for further information.

